

# FREE CCAT PRACTICE TEST TO PRINT

This simulation contains 30-questions and you have 9-minutes to try to answer all of them. The style of the questions and their level corresponds exactly to the original CCAT that you will need to pass for your recruitment.

For this free test, you need to answer correctly as fast as possible, because you only have 18 seconds per question, as with [the real CCAT](#). If you don't know how to answer a question, don't get stuck on it and move on to the next question. Don't answer the questions randomly, as you may be able to go back to them in case you have time left.

## QUESTION 1

1 cookbook is sold for \$9.50. Marie intends to buy 3 cookbooks. How much does she have to pay when she goes to the checkout at the store?

- A. \$22
- B. \$23.50
- C. \$26.50
- D. \$28
- E. \$28.50

## QUESTION 2

Martin wants to buy a chocolate ice cream. The price of an ice ball is \$1.50 but there is a promotion and for 3 balls purchased, the fourth is for free. How much will Martin have to pay if he buys four scoops of ice cream for himself and four for his girlfriend?

- A. \$8
- B. \$8.50
- C. \$9
- D. \$10
- E. \$11.50

### QUESTION 3

Which of the following values is the smallest?

- A. 0.04
- B. 0.09
- C. 1.12
- D. 1.004
- E. 0.05

QUESTION 4

Which of the following values is the highest?

- A. 1.008
- B. 0.009
- C. 1.08
- D. 1.004
- E. 1.8

QUESTION 5

20 is 20% of what number?

- A. 50
- B. 100
- C. 200
- D. 250
- E. 300

QUESTION 6

48 is 80% of what number?

- A. 50
- B. 55
- C. 60
- D. 65
- E. 70

## QUESTION 7

On Monday, 50 children bought a ticket for the ghost train attraction. If 30% more children bought a ticket to this attraction on the following Tuesday, how many tickets were sold during those two days?

- A. 30
- B. 65
- C. 85
- D. 115
- E. 165



### QUESTION 8

One kilo of Persian rice is sold for 5 cents per kilo. For 4 kilos purchased, the seller offers a 20% discount. If Josephine bought 12 kilos of rice, how much did she pay in total?

- A. \$48
- B. \$52
- C. \$58
- D. \$60
- E. \$64

### QUESTION 9

It takes Max three hours to run 30 kilometers. Georges, on the other hand, travels the same distance in 2 hours and 20 minutes. If both are to complete a 15-kilometre race, how long before Max will Georges arrive to the finish line?

- A. 10 minutes
- B. 20 minutes
- C. 30 minutes
- D. 40 minutes
- E. 50 minutes

## QUESTION 10

A group of four numbers has an average of 14. The first three numbers are 11, 12 and 17. What's the missing number?

- A. 11
- B. 13
- C. 15
- D. 16
- E. 18

### QUESTION 11

Peter has a box containing 65 red and blue balls. Counting them, he realizes that there is a ratio of 3 red balls to 10 blue balls. How many blue balls does he have in total?

- A. 15
- B. 20
- C. 30
- D. 45
- E. 50

## QUESTION 12

Jean has 5 shirts, 3 ties, 6 trousers and 2 coats in his wardrobe. How many different sets can he compose using a garment in each category each time?

- A. 60
- B. 80
- C. 180
- D. 200
- E. 220

QUESTION 13

What would be the next number in the following series?

1 ... 10 ... 2 ... 9 ... 3 ... ?

- A. 5
- B. 8
- C. 10
- D. 11
- E. 12

QUESTION 14

What would be the next number in the following series?

1 ... 3 ... 7 ... 15 ... 31 ... ?

- A. 63
- B. 75
- C. 83
- D. 92
- E. 94

### QUESTION 15

If there are 500 employees in [Vista Equity Partners](#), how many of them have worked there for between 2 and 10 years?

- A. 150
- B. 155
- C. 200
- D. 250
- E. 255





## QUESTION 16

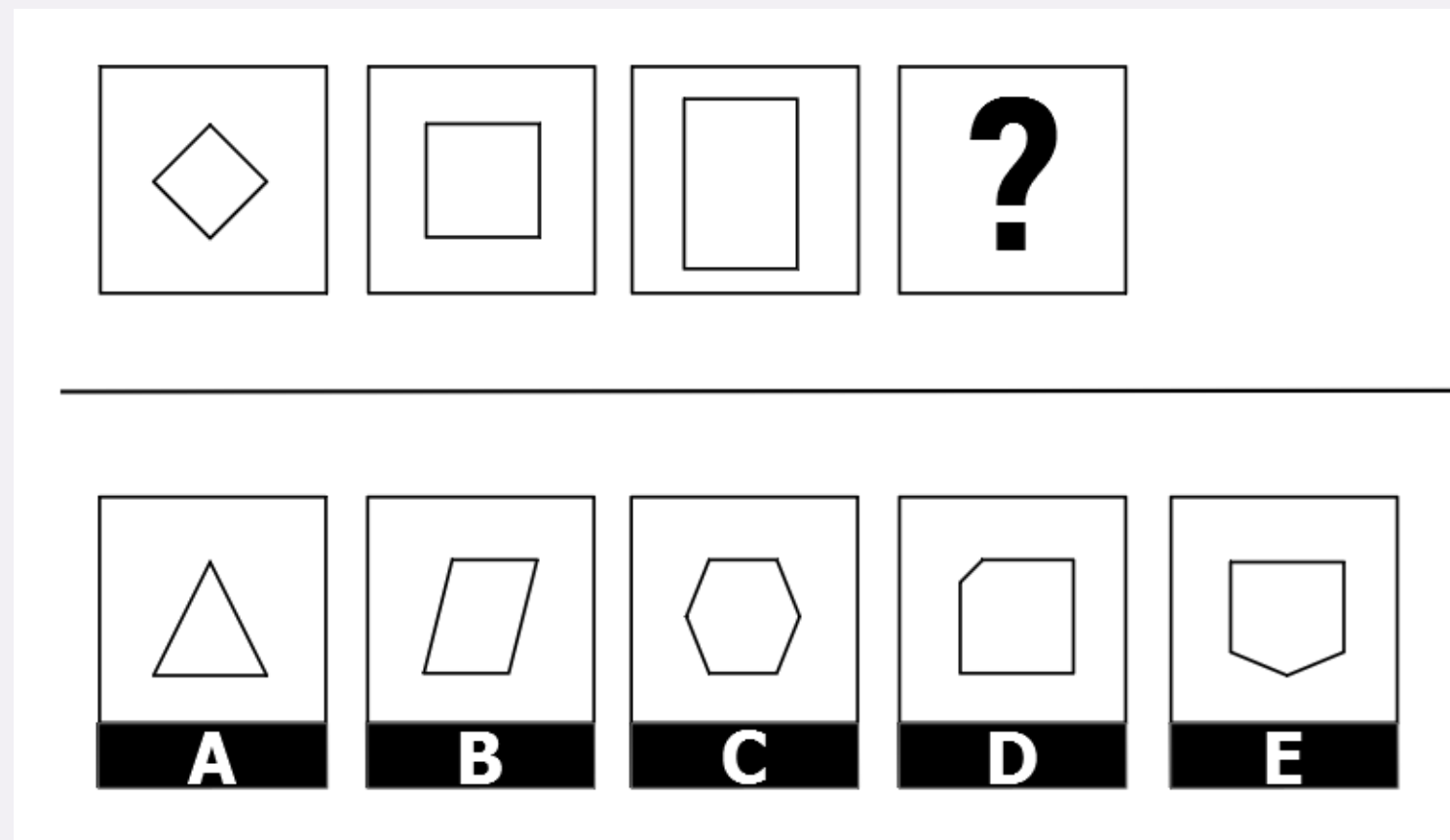
What is the average salary of program managers, private equity analysts and senior accountants together?

- A. \$86K
- B. \$87K
- C. \$91K
- D. \$93K
- E. \$97K

| Department             | Average Salary | Salary Range  |
|------------------------|----------------|---------------|
| Program Manager        | \$108K         | \$100K-\$115K |
| Director               | \$84K          | \$71K-\$95K   |
| Investor               | \$91K          | \$55K-\$113K  |
| Credit Analyst         | \$51K          | \$51K-\$51K   |
| Staff Accountant       | \$57K          | \$57K-\$57K   |
| Senior Accountant      | \$58K          | \$47K-\$67K   |
| Finance Manager        | \$79K          | \$68K-\$89K   |
| Controller             | \$133K         | \$132K-\$133K |
| Private Equity Analyst | \$107K         | \$98K-\$114K  |
| Marketing Manager      | \$63K          | \$51K-\$73K   |

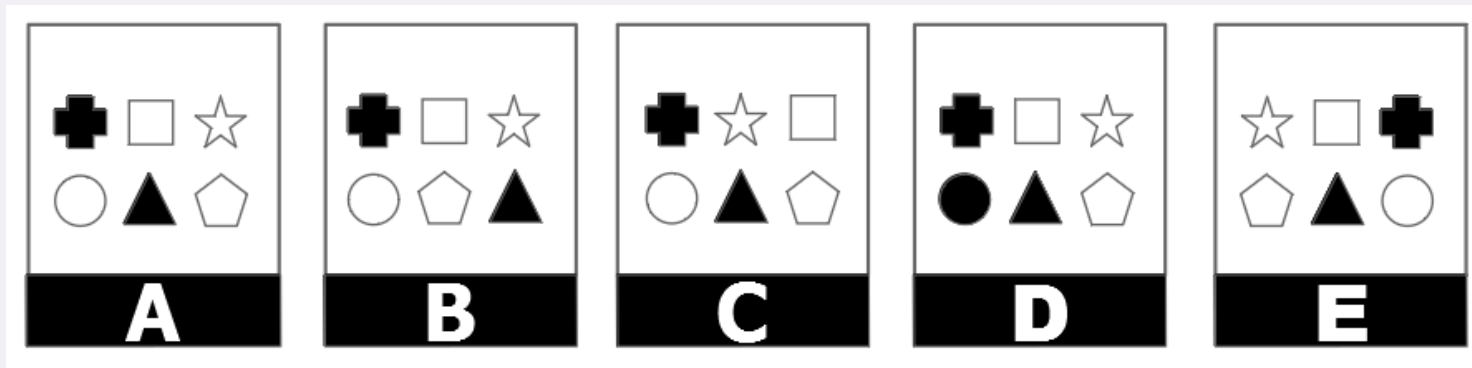
QUESTION 17

Which of the following boxes should replace the question mark (?) to complete the pattern?



QUESTION 18

Which of the following does not belong?



QUESTION 19

Which of the following boxes should replace the question mark (?) to complete the pattern?

The image shows a 3x3 grid of 3x3 sub-grids. The top-left cell contains a question mark. The other cells contain patterns of black squares. Below the grid are five options labeled A, B, C, D, and E.

|   |  |  |
|---|--|--|
| ? |  |  |
|   |  |  |
|   |  |  |

---

|  |  |  |  |  |
|--|--|--|--|--|
|  |  |  |  |  |
|--|--|--|--|--|

QUESTION 20

Choose the word that is most nearly the OPPOSITE to the word in capital letters.

PASSION

- A. fanaticism
- B. attachment
- C. calm
- D. frenzy
- E. hate

QUESTION 21

Choose the word that is most nearly the OPPOSITE to the word in capital letters.

SMART

- A. silly
- B. strong
- C. unhinged
- D. ingenious
- E. intelligent

QUESTION 22

What would be the next group of letters in the following series?

AOHV ... BPIW ... CQJX ... DRKY ... ?

- A. ELRZ
- B. EMSZ
- C. FMTZ
- D. ELSZ
- E. ELSY

QUESTION 23

What would be the next group of letters in the following series?

SZ ... YR ... QX ... WP ... ?

- A. NU
- B. OV
- C. MT
- D. LZ
- E. OW



## QUESTION 24

Choose the word or words that, when inserted in the sentence to replace the blank or blanks, fits the best with the meaning of the sentence.

Don't miss the visit to Osaka Castle, the Shinsekai district and the climb to the Umeda Sky for a \_\_\_ view of the city.

- A. panoramic
- B. low
- C. spherical
- D. circular
- E. golden

## QUESTION 25

Choose the word or words that, when inserted in the sentence to replace the blank or blanks, fits the best with the meaning of the sentence.

On the occasion of its 30th anniversary, a large \_\_\_ of sandwich-pastry stores in Belgium has been ranked as the most \_\_\_ sandwiches in the Kingdom.

- A. frame ... best
- B. succession ... bad
- C. chain ... popular
- D. closing ... nice
- E. line ... spicy

QUESTION 26

FRONTIER is to COUNTRY as...

- A. MIDNIGHT is to DAY
- B. BOILING is to WATER
- C. INTERCLASS is to WORK
- D. OXYGEN is to ATMOSPHERE
- E. LEG is to ARM

QUESTION 27

MANIFESTATION is to INSURRECTION as...

- A. CARE is to ADORATION
- B. PRAY is to LOVE
- C. REFUSE is to ACCEPTATION
- D. SICK is to FLU
- E. HATE is to ANGER

## QUESTION 28

How many of the five items in the left column are exactly the same as the corresponding entry in the right column?

- A. 1
- B. 2
- C. 3
- D. 4
- E. 5

|                   |                   |
|-------------------|-------------------|
| Terry N. Zapata   | Terry N. Zapata   |
| Julie C. Cooper   | Julie C. Cooper   |
| Kylie M. Anderson | Kyle M. Anderson  |
| Timothy C. Harris | Timothy C. Harrys |
| Mary D. Petry     | Mary D. Pettry    |

## QUESTION 29

Assume the first two statements are true. Is the final statement: 1) true, 2) false, or 3) uncertain based on the information provided?

Everything that is small is cute.

A kitten is small.

Therefore, a kitten is not cute.

- A. True
- B. False
- C. Uncertain

### QUESTION 30

Four individuals of different sizes - Elisabeth, Kiera, Guy and Amos - behave according to the following rule: each one trusts exclusively an individual of a higher size than him or herself. We know that Elisabeth only trusts Kiera.

One of the following situations is not possible. Which one?

- A. Amos trusts Kiera
- B. Guy does not trust Amos
- C. Amos only trusts Elisabeth
- D. Guy trusts everyone else
- E. Guy trusts Kiera

**FIND MORE INFORMATION  
AND COMPLETE  
SIMULATIONS ON  
CCATPRACTICETEST.COM**

EXPLORE MORE ON CCAT PRACTICE TEST.COM